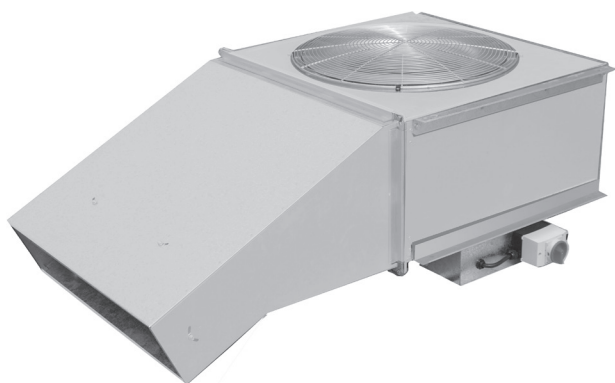


JETVENT WAREHOUSE AIR MOVER



DESCRIPTION

The JetVent Warehouse Air Mover has been designed to provide air movement in large enclosed areas such as warehouses and recreation facilities.

Suspended from the ceiling, it provides a cross-flow of air that aids the natural cooling process and creates a fresher environment that is more comfortable to be in.

Typical Applications

Large indoor facilities where generating air movement is essential to improving comfort. Examples of this are warehouses, factories, workshops, gymnasiums and public recreation facilities.

Features

- Eliminates the build-up of hot, stagnant and polluted air.
- Its gentle breeze creates less disturbance to the working environment.
- High level mounting position avoids plant operation interference.
- Adjustable discharge nozzle enables adjustment of air flow direction.
- Available with single and three-phase motors.
- Single-phase unit is speed-controllable and supplied with 3-pin plug and lead. Three-phase unit can be speed-controlled by using a Star/Delta 2-speed switch.
- Long lasting galvanised steel construction with grey powder-coated finish.
- For installations where unit is close to ceiling, model with inlet on the underside face is available.

Construction

Grey powder-coated galvanised steel housing.

Adjustable discharge nozzle.

Backward-curved centrifugal impeller.

Motors

Type - external rotor, squirrel cage induction motor.

Electricity supply - 220-240V, single-phase, 50Hz; 415V, three-phase, 50Hz.

Bearings - sealed-for-life, ball.

Single-phase motor - speed-controllable.

Three-phase motor - Can be wired in high or low speed.

2-speed available with installation of optional star/delta switch. Isolator switch fitted to fan.

See pages O-2/3 for details of these motors.

Internal thermal Protection

Internal thermal protection is supplied as standard on all units.

Wiring Diagram

Not required for single-phase fan.

For three-phase wiring see page N-9, diagram ER9.

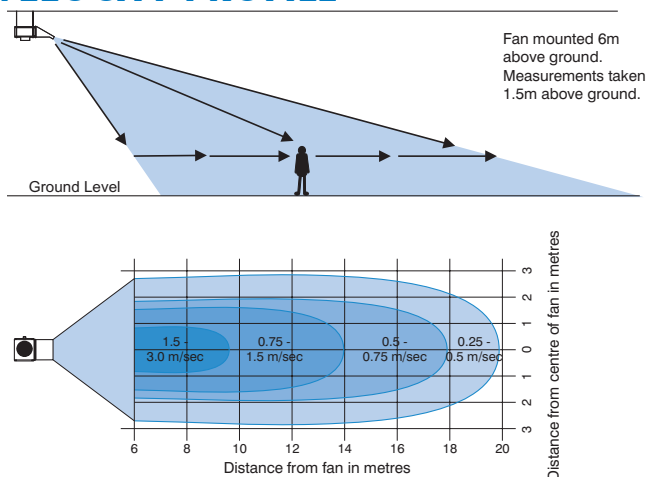
SUGGESTED SPECIFICATION

The ceiling suspended cooling fan shall be of the JetVent Warehouse Air Mover Series as designed and manufactured by Fantech Pty Ltd and be of the model numbers shown on the schedule/drawings.

Impellers shall be backward-curved design and driven by speed-controllable external rotor motors.

It shall include an adjustable discharge nozzle and its housing be manufactured from light grey, powder-coated, galvanised steel.

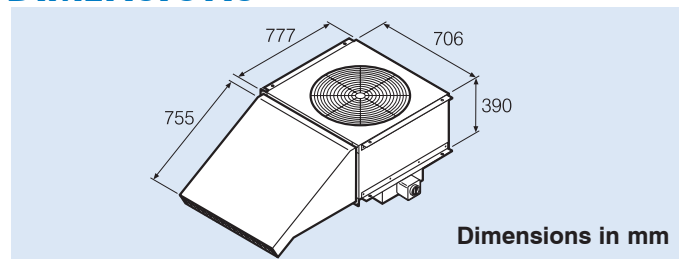
VELOCITY PROFILE



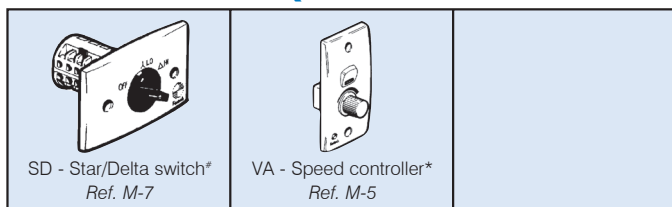
TECHNICAL DATA

Model Number	Speed Setting	Discharge Thrust	Avg. dB(A) @ 3m	Volts	kW	Amps	App. Wt. kg
JVWD6	High	12N	54	415	0.69	1.45	85
	Low	3N	50		0.39	0.79	
JVWE6	-	12N	54	240	0.84	4.10	

DIMENSIONS

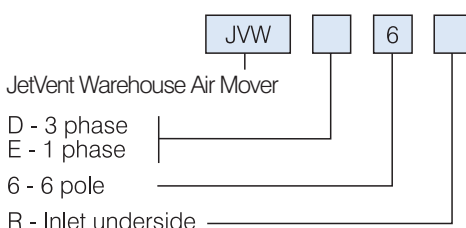


ANCILLARY EQUIPMENT



Applicable for JVWD6 unit (Three phase) only.
* Applicable for JVWE6 unit (Single phase) only.

HOW TO ORDER



Scan the QR code to view more information online.

