

RAPID RESPONSE HEADER BOX FAN

A



See pages A-36 for Grille options

DESCRIPTION

The modern range of Rapid Response ceiling mounted header box fans are the quietest and most powerful in their class. Their fully optimised inlet cone and centrifugal impeller design maximises air pressure that ensures rooms are quickly cleared of steam and unpleasant odours. The Rapid Response range includes a unique swing clip and removable spigot that makes it very easy to install into standard round fan cut outs.

Typical Applications

Exhausts from residential or light commercial applications such as toilets, bathrooms, laundries, kitchens and ensuites. Their low profile compact design and side exhaust outlet makes them suitable for mounting between floors and applications with low ceiling heights such as cathedral ceilings.

Features

- Advanced impeller and housing design provides powerful air flow and minimises noise
- High strength swing clips make installation easy
- Low resistance non-return backdraft damper maximises air flow performance
- Easy to remove diffuser makes cleaning simple
- RESPF8 model can be retrofitted into a standard 8" round fan cut out, RESPF150 model can be retrofitted into a standard 10" round fan cut out
- Fitted plug and lead simplifies installation
- Square diffuser can be easily rotated to align with walls
- Modern square and round diffusers available
- Available with a 3 to 15 minute adjustable run-on timer

Construction

Housing and diffuser are made from injected moulded, fire retardant, ABS plastic. Impellers are forward-curved centrifugal, driven by a squirrel cage motor.

Motor

Type - squirrel cage induction motor.
Electricity supply - 230V, single-phase, 50Hz.
Bearings - sealed for life, ball.
See pages O-2/3 for details on these motors.

Internal Thermal Protection

Automatic reset thermal protection is fitted as standard.

Testing

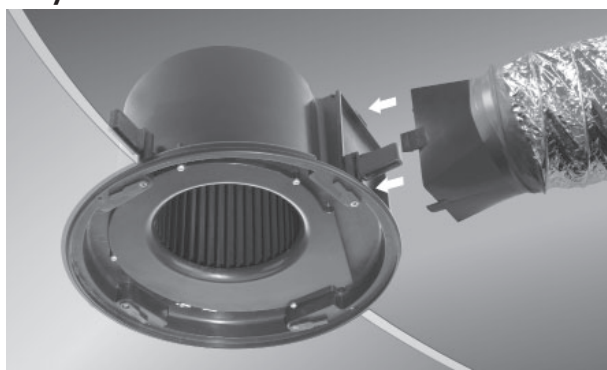
Air flow to ISO5801: 2007
Noise to ISO3744: 2010

Special Note

Rapid Response Grilles are purchased separately. Timer models RESPF8-T and RESPF150T include a plug and lead to suit HPM 33 or Clipsal 413/4P bases.

SPECIAL FEATURES

Easy duct connection



Long clip-in spigot makes installation and duct connection easier.

Installation is made easy



Rotate swing clips to hold fan body in place.



Tighten screws so clips clamp onto ceiling board.

RAPID RESPONSE HEADER BOX FAN

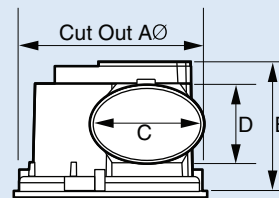
SUGGESTED SPECIFICATION

The ceiling fans shall be of the Rapid Response Header Box Series as designed by Fantech Pty Ltd. and be of the model number shown on the schedule/drawing.

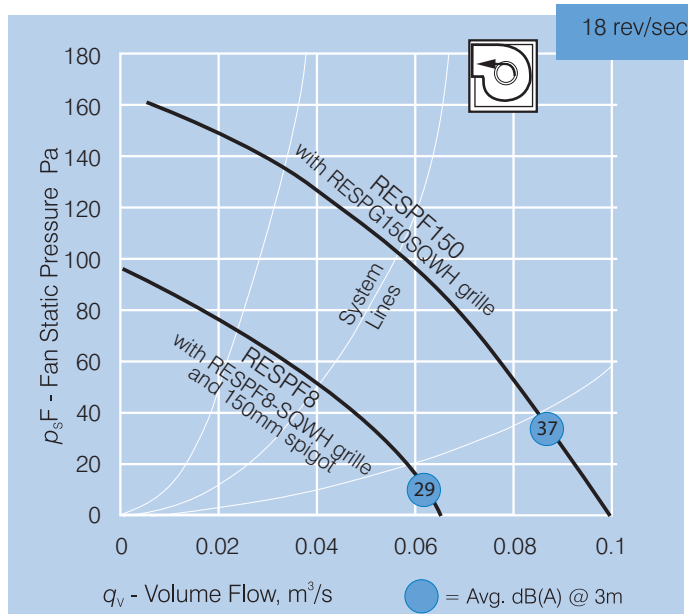
Impellers shall be forward-curved centrifugal and driven by a squirrel cage motor with integral thermal protection. They shall be fitted with high strength swing clips, removable spigot, low resistance non-return backdraft damper and removable clip-in diffuser. They shall include a plug and lead, and its housing and diffuser be made of injected moulded, fire retardant, ABS plastic.

They shall be tested to ISO5801: 2007 for air flow and ISO3744: 2010 for noise.

DIMENSIONS



PERFORMANCE CURVE



Model Number	Cut out AØ	Dimensions, mm		
		B	C	D
RESPF8..	250	195	105/170*	94/120*
RESPF150..	290	197	170**	120

* To suits 100mm or 150mm duct

** To suits 150mm duct

HOW TO ORDER

RESPF8 - Response Fan

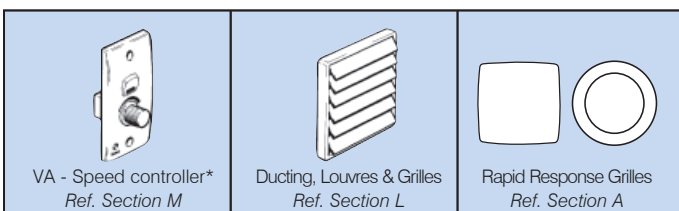
RESPF150 - Response Fan

T - 3 to 15 minute adjustable run-on timer

TECHNICAL DATA

Model Number	Fan Speed	Avg. dB(A)	App. Wt.		
	rev/sec	@ 3m	Watts	Amps	kg
RESPF8..	16	29	30	0.13	3
RESPF150..	16	37	60	0.27	3.25

ANCILLARY EQUIPMENT



* Not suitable for models with run-on timers



Scan the QR Code to view more information online.