

A Real Advance in HVLS Technology



The **Hunter Range** of innovative, direct-drive HVLS fans use a unique aerofoil blade design with twist profile that maximises efficiency across the entire range of fan diameters.



The New Standard in HVLS Fans

Hunter's range of industrial fans gives better performance and efficiency with a direct drive motor specially developed for HVLS fans that also reduces the fan's overall weight. In collaboration with an aerospace engineer, Hunter has created an aerofoil blade with a unique and cutting edge twist profile that maximises efficiency across the range of fan diameters. This advanced blade design delivers a higher volumetric flow rate whilst minimising power consumption.

Who is Hunter Fan Company?

Hunter Fan Company was established in 1886 when its founder John Hunter and his son James invented a water-powered, belt driven device with whirling blades. Hunter is now one of the largest residential fan companies in the world and is committed to quality and innovation. Hunter Industrial is part of that heritage with their HVLS fans embodying their passion for pioneering ceiling fan technologies.

Hunter
INDUSTRIAL



Features and Benefits

Next Generation Direct Drive Motor

Utilises a high-performance direct drive, permanent magnet motor to increase energy efficiency and reduce fan weight. It generates large amounts of torque at slow speeds while providing whisper-quiet gearless operation.

Cutting Edge Blade Technology

Hunter's structural grade aluminium blades maximise air flow and minimise noise levels with a unique twist profile to match each individual fan size.

Effortless Installation

Time-saving plug-n-play system includes pre-installed bolts, pre-wired drop tube pre-aligned mounting brackets and I-beam clamp.

Contemporary Style

Built tough with a sleek design that will complement any showroom, sports centre or warehouse.

Four HVLS Fan Ranges

- Hunter Titan - 5 sizes from 4.2 (14') to 7.3 (24') metres
- Hunter ECO - 8 sizes from 2.4 (8') to 7.3 (24') metres
- Hunter RM - 4 sizes from 2.4 (8') to 4.2 (14') metres
- Hunter Trak - 4 sizes from 1.5 (5') to 2.4 (8') metres



Hunter Titan HVLS Fan

There are large industrial HVLS fans, and there's the Titan. Available in five sizes from 4.2m to 7.3m this master of the air thoroughly mixes the air within an indoor space eliminating uneven temperatures. It can reduce energy costs, improve comfort and increase productivity. The Titan features an efficient direct drive permanent magnet motor designed to be quieter, generate large amounts of torque and is up to 25% more efficient than gear driven HVLS fans. These Hunter HVLS fans not only provide widespread air movement, they also have a sleek and contemporary design that will complement any commercial space.

- Blades are formed with a unique twist profile for each individual fan size to maximise air flow and minimise noise levels
- Simplifies installation with pre-installed bolts, quick connect blades, pre-wired drop tube, pre-aligned mounting brackets and I-beam clamp
- Effective coverage area ranges from 484 m² (4.2 m Titan HVLS) to 1,369 m² (7.3 m Titan HVLS)
- Highly efficient 5 blade configuration designed to maximise airflow performance
- A range of proprietary controllers are available to range from 1 to 30 fans. See page 11 for more information on the controller range.
- Can be connected to a Building Management System (BMS)



** Limited lifetime warranty applies when the fan is installed by a Fantech Authorised Installer. Conditions apply. See page 11.*

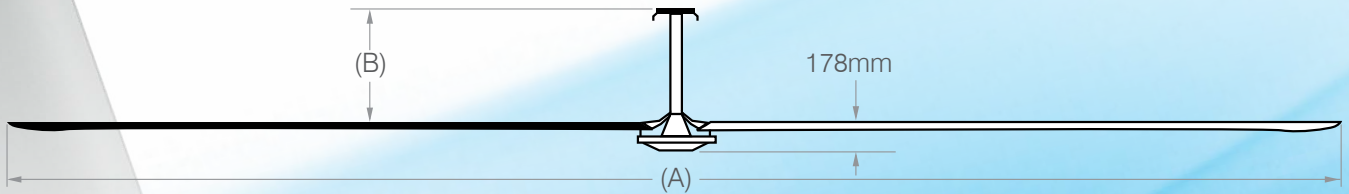


Each blade on the Titan HVLS fan snap-locks into the direct drive motor hub and is secured via 2 fixing screws



Technical Data

Model No.	HUNTER-TITAN14	HUNTER-TITAN16	HUNTER-TITAN18	HUNTER-TITAN20	HUNTER-TITAN24
Fan Diameter (A)	4.2 m	4.8 m	5.5 m	6.1 m	7.3 m
Input Power	AC 3PH 380-480V 50/60 Hz				
Full Load Amp	1.2 Amps	1.8 Amps	2.4 Amps	2.6 Amps	3.0 Amps
Motor Power	3/4 HP	1 HP	1 HP	1 HP	1 HP
	0.56 kW	0.75 kW	0.75 kW	0.75 kW	0.75 kW
Effective Range Area*	484 m ²	625 m ²	784 m ²	961 m ²	1,369 m ²
Max air flow AMCA230-15	40.78 m ³ /s	61.09 m ³ /s	68.56 m ³ /s	76.64 m ³ /s	105.44 m ³ /s
Max air flow AMCA 230-99	57.68 m ³ /s	86.41 m ³ /s	96.96 m ³ /s	108.40 m ³ /s	149.14 m ³ /s
Max RPM	103	102	95	74	70
Fan Hang Weight#	76.2 kg	79 kg	83 kg	86 kg	93 kg



* Effective range area is based on 1.5 to 2 m/s air flow at face/chest level

Total fan hang weight. Included blades, motor, hanging system, accessories

(B) Drop tube options available in 61cm, 90 cm, 121cm, 182 cm, 243 cm and 305 cm sizes





Hunter **ECO** HVLS Fan

Hunter ECO is one of the lightest HVLS fans available with robust direct drive motor and structural aluminium blade design. The range also comes with the same plug & play, pre-assembled technology to simplify installation and a choice of touchscreen controllers to manage a network of up to ten HVLS fans.

With blade spans from 2.4m to 7.3m, the Hunter ECO range of HVLS fans will de-stratify your building space and reduce your energy bill while making your workforce comfortable and more productive.

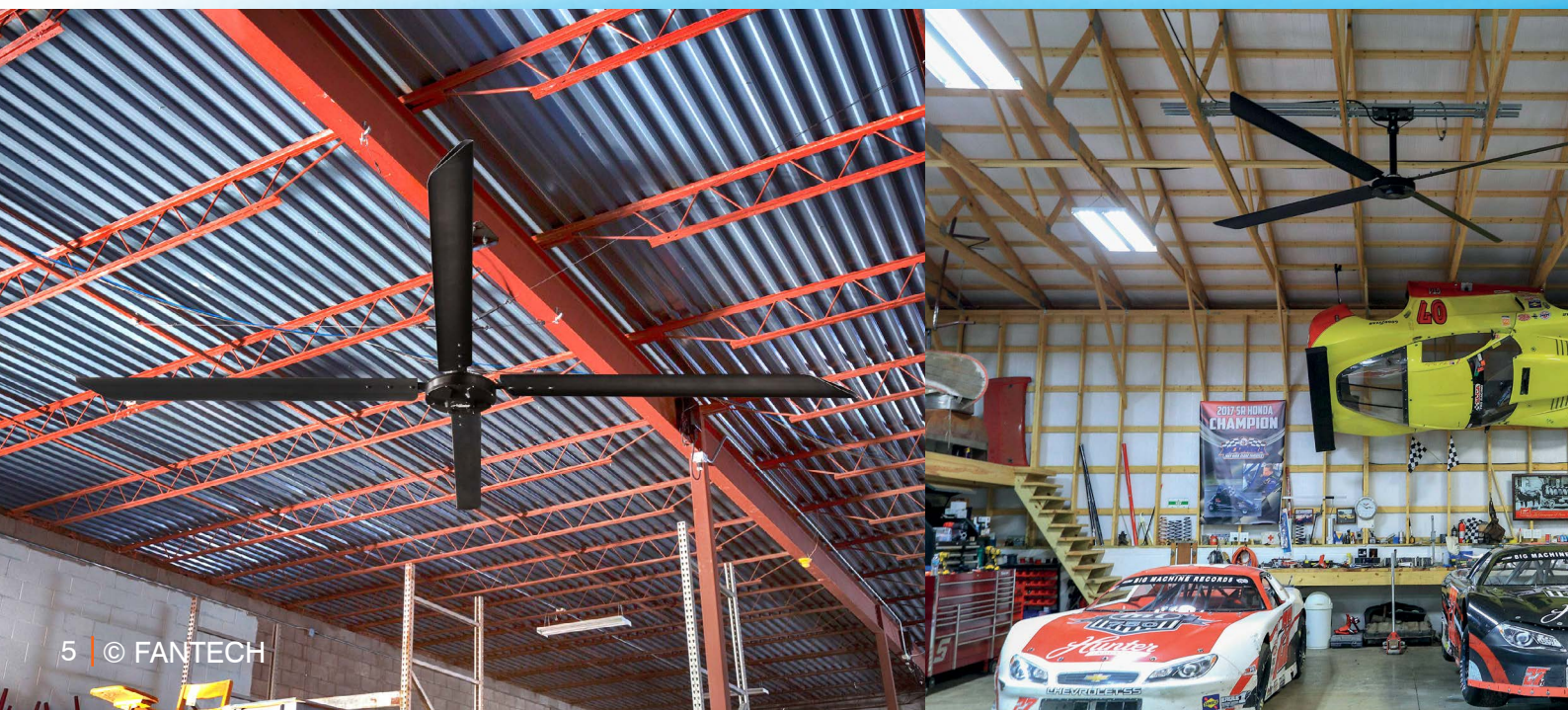
- Blades are formed with a unique twist profile for each individual fan size to maximise air flow and minimise noise levels
- Simplifies installation with pre-installed bolts, quick connect blades, pre-wired drop tube, pre-aligned mounting brackets and I-beam clamp
- Effective coverage area ranges from 95m² (2.4m ECO HVLS) to 858m² (7.3m ECO HVLS)
- Highly efficient 4 blade configuration designed to maximise airflow performance
- A range of proprietary controllers are available to range from 1 to 30 fans. See page 11 for more information on the controller range.
- Can be connected to a Building Management System (BMS) for improved fan efficiency



** Limited lifetime warranty applies when the fan is installed by a Fantech Authorised Installer. Conditions apply, see page 11.*

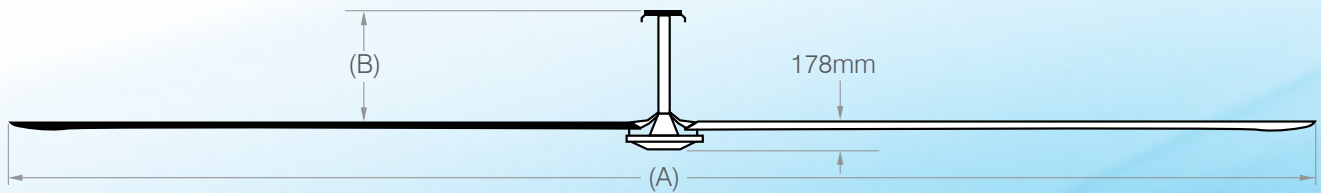


Each blade on the ECO HVLS fan is bolted to the direct drive motor hub via pre-installed studs



Technical Data

Model No.	HUNTER-ECO08	HUNTER-ECO10	HUNTER-ECO12	HUNTER-ECO14	HUNTER-ECO16	HUNTER-ECO18	HUNTER-ECO20	HUNTER-ECO24
Fan Diameter(A)	2.4 m	3.0 m	3.6 m	4.2 m	4.8 m	5.5 m	6.1 m	7.3 m
Input Power	AC 3PH 380-480V 50/60 Hz							
Full Load Amp	1.2 Amps	1.9 Amps	1.9 Amps	2.0 Amps	2.0 Amps	2.0 Amps	2.1 Amps	2.3 Amps
Motor Power	5/8 HP	5/8 HP	5/8 HP	5/8 HP	5/8 HP	5/8 HP	5/8 HP	5/8 HP
	0.466 kW	0.466 kW	0.466 kW	0.466 kW	0.466 kW	0.466 kW	0.466 kW	0.466 kW
Effective Range Area*	95 m ²	149 m ²	214 m ²	291 m ²	380 m ²	484 m ²	595 m ²	858 m ²
Max air flow AMCA230-15	15.41 m ³ /s	25.02 m ³ /s	30.38 m ³ /s	40.69 m ³ /s	51.40 m ³ /s	60.27 m ³ /s	72.17 m ³ /s	96.48 m ³ /s
Max air flow AMCA 230-99	21.80 m ³ /s	35.39 m ³ /s	42.97 m ³ /s	57.55 m ³ /s	72.70 m ³ /s	85.25 m ³ /s	102.08 m ³ /s	136.46 m ³ /s
Max RPM	156	139	107	107	95	78	77	61
Fan Hang Weight#	40 kg	43 kg	46 kg	58 kg	61 kg	62 kg	66 kg	72 kg



* Effective range area is based on 1.5 to 2 m/s air flow at face/chest level
 # Total fan hang weight. Included blades, motor, hanging system, accessories
 (B) Drop tubes available in 61cm, 90 cm, 121 cm, 182cm, 243 cm and 305 cm sizes.





Rigid down rod design - No guide wires required

Hunter **RM** HVLS Fan

The Hunter RM series High Volume, Low Speed (HVLS) is specially designed for hassle-free and cost saving installations. Engineered with a direct drive motor and single phase input, the RM comes with a pre-wired drop tube that uses a self-levelling and a quick connect mounting system.

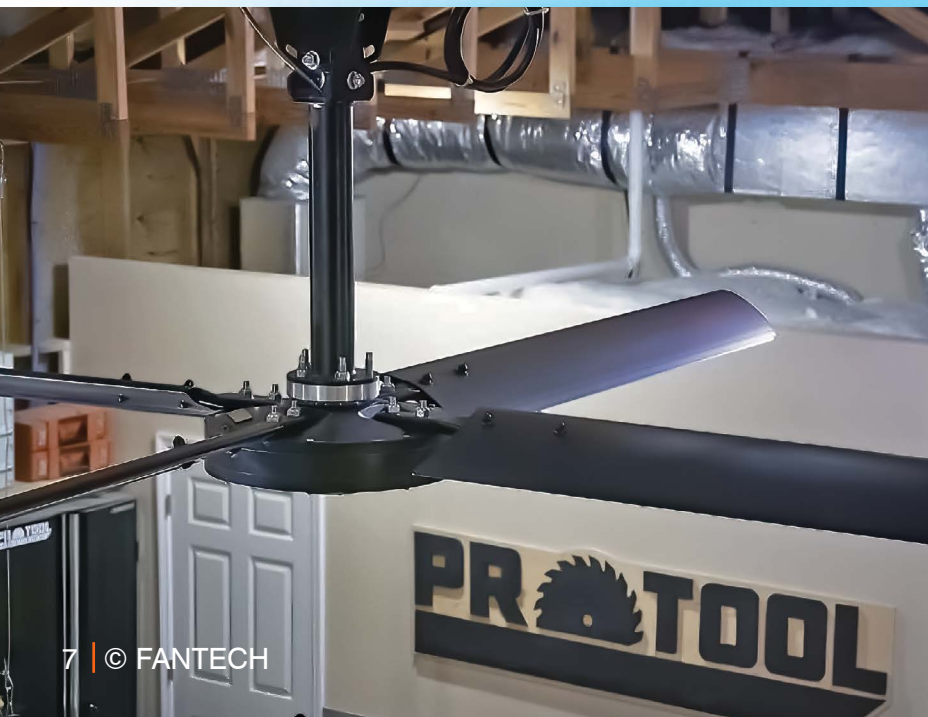
Hunter RM series HVLS fans are available in 4 sizes; 2400 mm, 3000 mm, 3600 mm and 4200 mm diameter. They are well suited to large indoor facilities where generating air movement is essential for improving comfort, such as warehouses, factories, workshops, gymnasiums and public recreation facilities.

- Energy efficient and compact, single phase direct drive permanent magnet motor.
- Blades are formed with a unique twist profile for each individually fan size to maximise air flow and minimise noise levels.
- Time saving plug-n-play system with pre-installed bolts and I-beam clamp
- Rigid drop tube that does not require guide wires
- Highly efficient 4 blade configuration.
- Comes with a pre-configured proprietary VSD.
- A range of proprietary controllers are available to range from 1 to 30 fans. See page 11 for more information on the controller range.



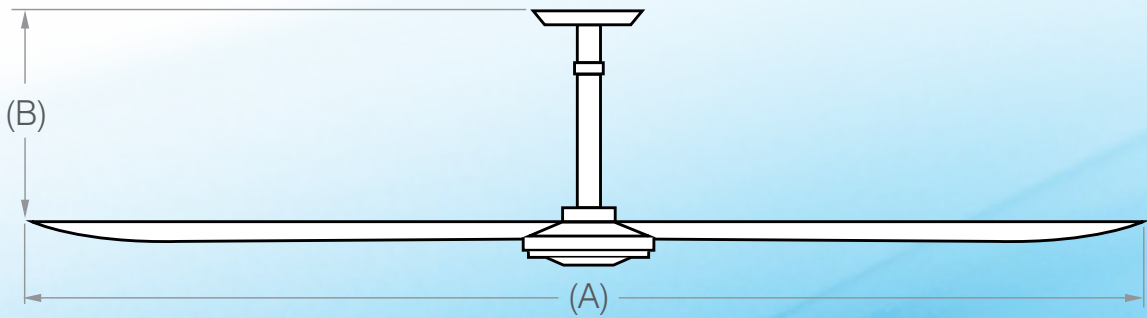
**Limited lifetime warranty applies when the fan is installed by a Fantech Authorised Installer. Conditions apply See page 11.*

Comes with an all-in-one rigid drop tube that simplifies installation and doesn't need guide wires

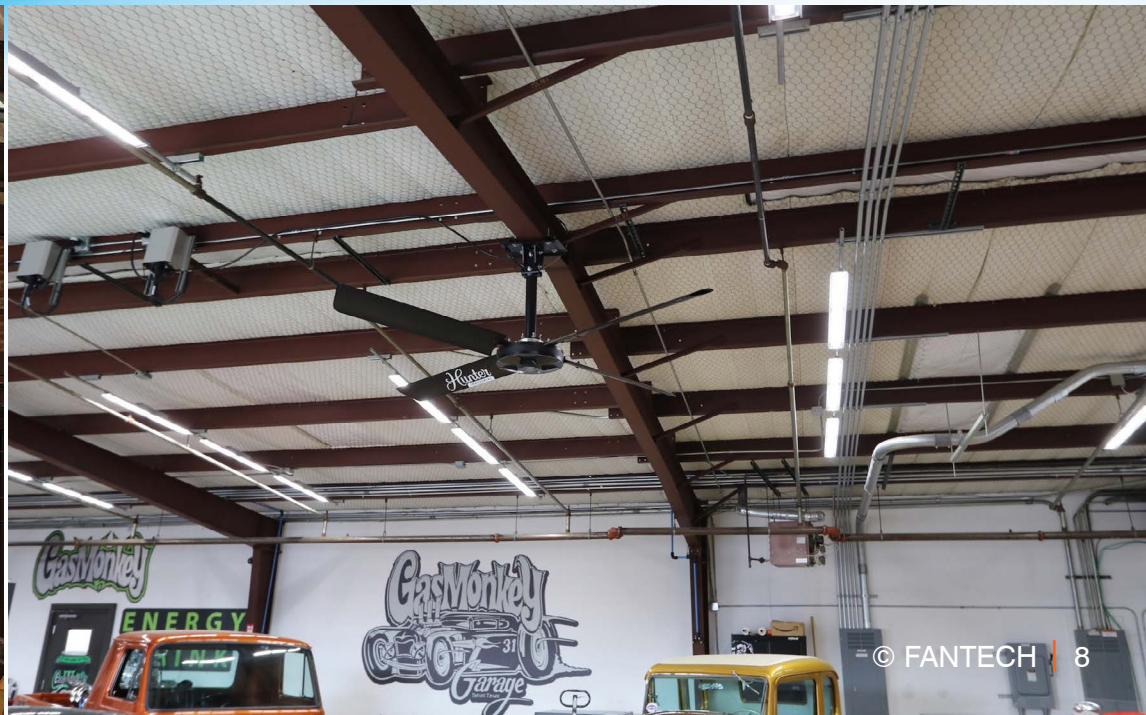


Technical Data

Model No.	HUNTER-RM08-1PH	HUNTER-RM10-1PH	HUNTER-RM12-1PH	HUNTER-RM14-1PH
Fan Diameter(A)	2.4 m	3.0 m	3.6 m	4.2 m
Input Power	AC 1PH 240V 50/60 Hz			
Full Load Amps	1.2 Amps	1.9 Amps	1.9 Amps	2.0 Amps
Motor Power	5/8 HP	5/8 HP	5/8 HP	5/8 HP
	0.47 kW	0.47 kW	0.47 kW	0.47 kW
Effective Range Area*	95 m ²	149 m ²	214 m ²	291 m ²
Max air flow AMCA230-15	15.41 m ³ /s	25.02 m ³ /s	30.38 m ³ /s	40.69 m ³ /s
Max air flow AMCA 230-99	21.80 m ³ /s	35.39 m ³ /s	42.97 m ³ /s	57.55 m ³ /s
Max RPM	156	139	108	108
Fan Hang Weight#	47 kg	49 kg	53 kg	55 kg



* Effective range area is based on 1.5 to 2 m/s air flow at face/chest level
 # Total fan hang weight. Included blades, motor, hanging system, accessories
 (B) Drop tubes available in 61cm, 90 cm and 121cm sizes





Hunter Trak HVLS Fan

The Hunter Trak ceiling fan combines a balance of performance and modern design. Trak blends elegantly into its surroundings while providing the cooling effect and airflow that commercial spaces need. Its design includes a single phase direct drive motor and extruded aluminium blades that deliver optimal airflow for larger spaces.

The Trak is well suited to indoor commercial applications and also outdoor spaces such as restaurants, meeting areas, patios, fitness centres, and schools.

- Energy efficient, 8-speed EC motor that can be operated in forward or reverse
- IP45 rated for use in outdoor areas exposed to the weather such as outdoor dining
- Time saving plug-n-play system with pre-installed components
- Comes standard with a 30 cm long life stainless steel drop tube
- Highly efficient 4 blade configuration with an 18° blade pitch for optimal air movement
- Trak comes in matt black as standard

Options:

- White or silver grey colours available on request
- 30 W LED light mounted at the base of the fan hub
- Longer down rods; 61cm, 90 cm, 121cm, 152 cm

- * Lead times apply for optional fan colours, lights and longer drop tubes

Comes with a wireless wall controller for easy adjustment of fan speed, fan direction and dimmer function for optional light.

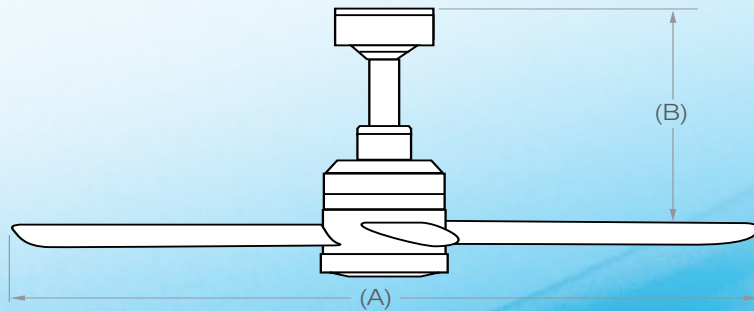


**Limited lifetime warranty applies when the fan is installed by a Fantech Authorised Installer. Conditions apply, See page 11*



Technical Data

Model No.	HUNTER-TRAK05-1PH	HUNTER-TRAK06-1PH	HUNTER-TRAK07-1PH	HUNTER-TRAK08-1PH
Fan Diameter (A)	1.5 m	1.8 m	2.1 m	2.4 m
Input Power	AC 1PH 240V 50/60 Hz			
Full Load Amps	1.16 Amps	1.16 Amps	1.16 Amps	1.16 Amps
Motor Power	0.13 HP	0.13 HP	0.13 HP	0.13 HP
	0.1 kW	0.1 kW	0.1 kW	0.1 kW
Effective Range Area*	37 m ²	54 m ²	73 m ²	95 m ²
Max air flow AMCA 230-15	6.15 m ³ /s	8.45 m ³ /s	10.44 m ³ /s	11.69 m ³ /s
Max air flow AMCA 230-99	8.70 m ³ /s	11.95 m ³ /s	14.77 m ³ /s	16.54 m ³ /s
Max RPM	240	185	175	145
Fan Hang Weight#	21 kg	22 kg	22 kg	23 kg



* Effective range area is based on 1.5 to 2 m/s air flow at face/chest level

Total fan hang weight. Included blades, motor, hanging system, accessories

(B) Drop tube options available in 30 cm, 61cm, 90 cm, 121cm and 152 cm sizes





Controllers

These touchscreen controllers are used with the Hunter Titan, Eco and RM HVLS fans and designed to manage from one Hunter HVLS fan to a large system with multiple fans and sensors. The control system takes advantage of the latest digital technology to ensure it can be tailored to suit the requirements of almost any high ceiling application.

Optional BMS BACnet gateway modules are also available.

700E Series Touchscreen Controller

- Controls up to 30 fans
- Fan grouping, program scheduling, fan and group naming, password protection
- Intuitive graphic user interface
- Fan diagnostics on screen
- Speed control in forward and reverse
- Includes two temperature & humidity sensors



500 Series Touchscreen Controller

- Controls up to 30 fans
- Fan grouping, program scheduling, fan and group naming, password protection
- Intuitive graphic user interface
- Fan diagnostics on screen
- Speed control in forward and reverse



350 Series Touchscreen Controller

- Controls up to 5 fans
- Intuitive graphic user interface
- Fan diagnostics on screen
- Speed control in forward and reverse



Warranty

The manufacturer shall replace any HVLS fan component defective in material or workmanship free of charge pursuant to the complete terms and conditions of Hunter Industrial's Limited Lifetime Warranty in accordance to the following summary:

- Aerofoils Limited Lifetime**
- Hub and Blade Holder Limited Lifetime**
- Direct Drive Motor Limited Lifetime**
- Variable Speed Drive 10 Year (Parts)
- HVLS Controller 8 Years (Parts)
- All other components Limited Lifetime (Parts)**
- Labour 1 Year

** "Lifetime" means components are covered for as long as the fan is operating at the original installation site or until 7 years after Hunter Industrial discontinues manufacturing the fan model.

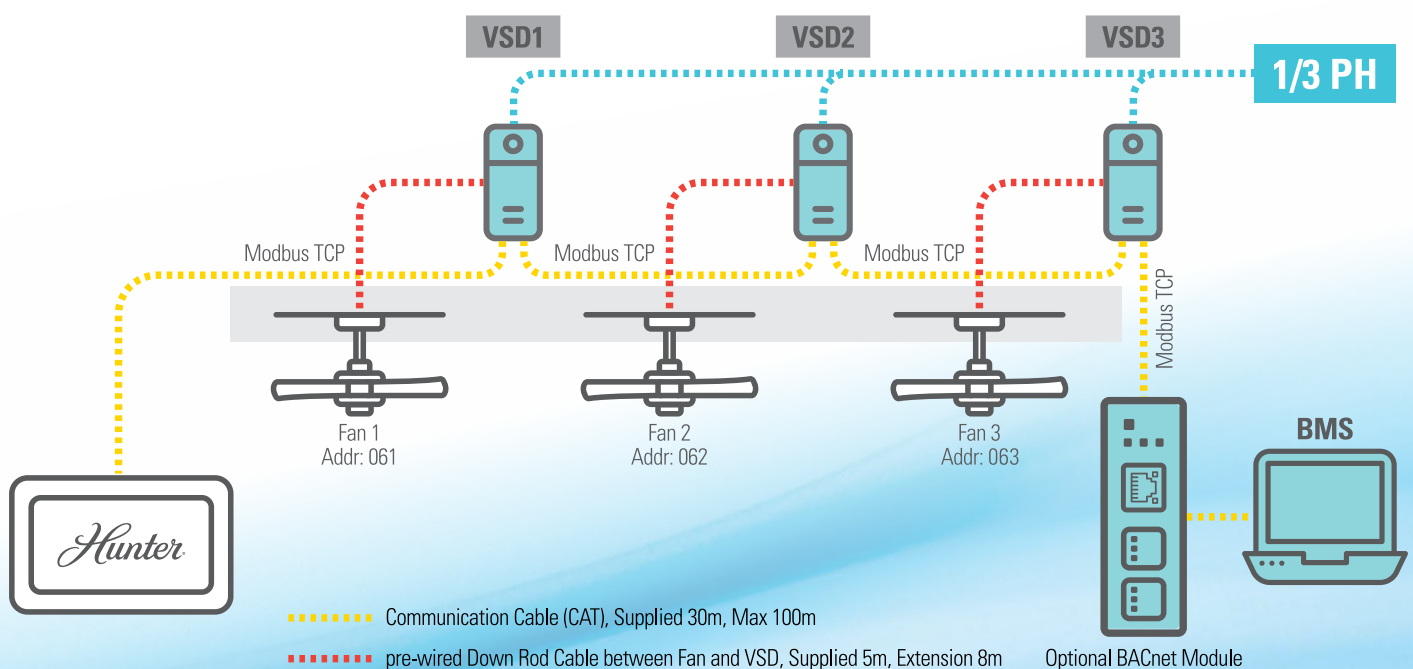
Direct Drive Permanent Magnet Motor

HVLS fans from Hunter use direct drive, permanent magnet motors that come with several advantages:

- Generates large amounts of torque while operating at slow speeds
- Whisper quiet gearless operation at less than 55dBA @ 3metres
- Offers significant savings on running costs and efficient performance under partial loads
- Up to 25% more energy efficient than gearbox or gear driven fan motor
- Extremely durable with fewer components
- Comes with a pre-configured VSD with simple push and turn plugs to connect to motor and touchscreen

Typical Wiring

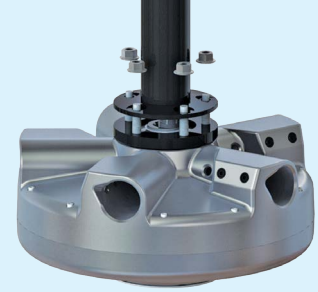
Below is a typical setup for 3 Hunter industrial HVLS fans connected to a building management system with controller, VSDs and optional BACnet capability.



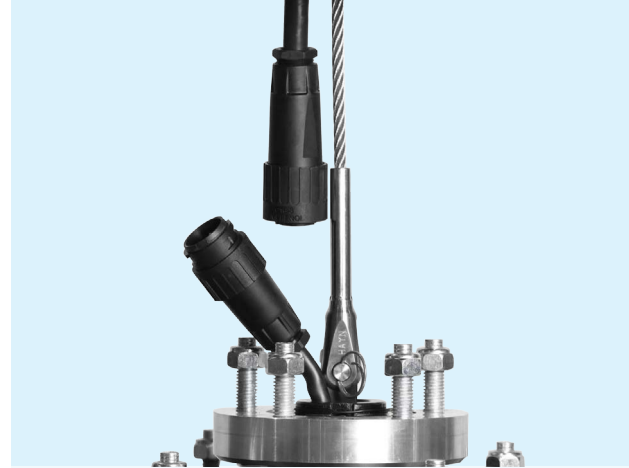
Engineered for Easy Installation

When Hunter's HVLS fans were developed, ease of installation was a primary factor in its engineering. The result is a range of Hunter HVLS fans that are quick to install, simple to commission and reduce the risk of installation mistakes. Hunter fans have fewer blades, fewer moving parts, the range weighs less and everything that can be pre-assembled has been.

- Hunter HVLS fans come with pre-installed studs, a pre-wired drop tube, and pre-aligned mounting brackets
- Blade clamps are replaced with a proprietary quick connect blade system
- Drop tubes on the industrial ranges of Hunter HVLS fans come with a quick connect clamping system that attaches the drop tube to the building's I-beam without drilling holes.



Integrated mounting plate with drop tube and pre-installed studs simplifies motor mounting



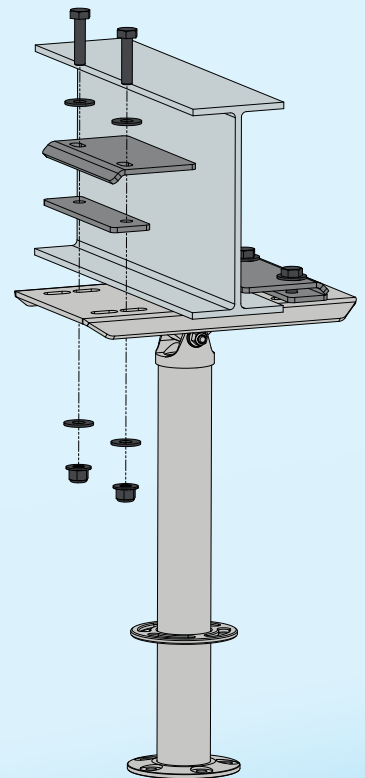
Easy to connect power and safety cable from the dropper tube to motor hub



All Hunter drop tubes come with pre-wired with power and safety cable



Drop tube with integrated universal joint for pitched roof alignment



Hunter's industrial HVLS fans use a quick connect clamping system eliminates the need to drill holes into the building's I-beam



Titan Range: Each blade snap-locks into the direct drive motor hub and secured via fixing screws



ECO / RM / Trak range: Each blade is bolted to the direct drive motor hub via pre-installed studs

Quick Reference Chart

Premium Industrial



Hunter Titan HVLS Fans

Product Code	Description
HUNTER-TITAN14	4.2m Titan HVLS fan
HUNTER-TITAN16	4.8m Titan HVLS fan
HUNTER-TITAN18	5.5m Titan HVLS fan
HUNTER-TITAN20	6.1m Titan HVLS fan
HUNTER-TITAN24	7.3m Titan HVLS fan

Standard Industrial



Hunter ECO HVLS Fans

Product Code	Description
HUNTER-ECO08	2.4m ECO HVLS fan
HUNTER-ECO10	3.0m ECO HVLS fan
HUNTER-ECO12	3.6m ECO HVLS fan
HUNTER-ECO14	4.2m ECO HVLS fan
HUNTER-ECO16	4.8m ECO HVLS fan
HUNTER-ECO18	5.5m ECO HVLS fan
HUNTER-ECO20	6.1m ECO HVLS fan
HUNTER-ECO24	7.3m ECO HVLS fan

Premium Commercial



Hunter RM HVLS Fans

Product Code	Description
HUNTER-RM08-1PH	2.4m RM HVLS fan
HUNTER-RM10-1PH	3.0m RM HVLS fan
HUNTER-RM12-1PH	3.6m RM HVLS fan
HUNTER-RM14-1PH	4.2m RM HVLS fan

Commercial



Hunter Trak HVLS Fans

Product Code	Description
HUNTER-TRAK05BK	1.5m Trak HVLS fan (with 30cm drop tube)
HUNTER-TRAK06BK	1.8m Trak HVLS fan (with 30cm drop tube)
HUNTER-TRAK07BK	2.1m Trak HVLS fan (with 30cm drop tube)
HUNTER-TRAK08BK	2.4m Trak HVLS fan (with 30cm drop tube)

Hunter Controls

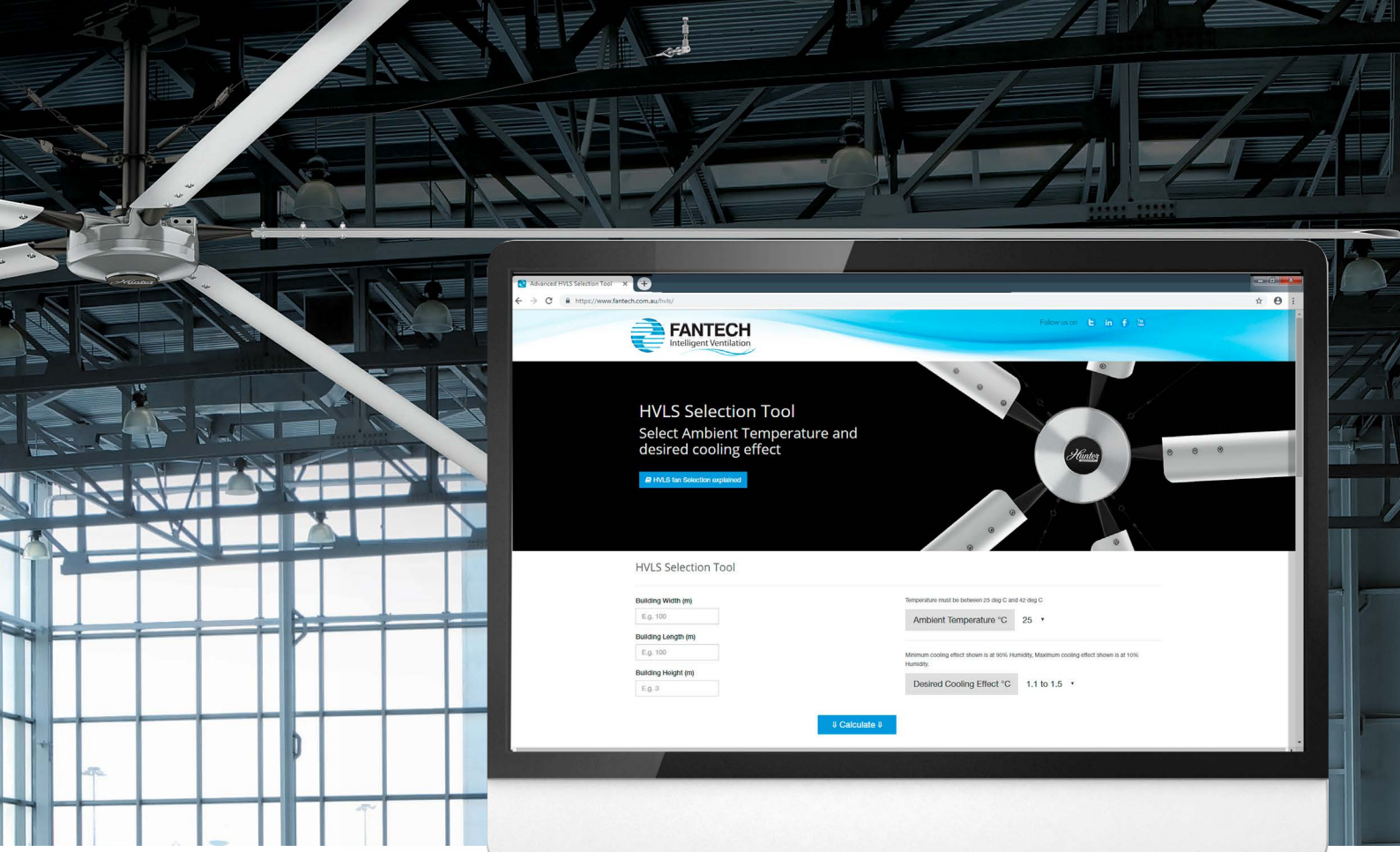


Product Code	Description
HUNTER2-TS350	Hunter 350 Touchscreen Controller (5 fans)
HUNTER2-TS500	Hunter 500 Touchscreen Controller (30 fans)
HUNTER2-TS700E	Hunter 700E Touchscreen Controller (30 fans)
HUNTER2-GW-TCP	Hunter BMS Gateway BACnet TCP-IP
HUNTER2-GW-MSTP	Hunter BMS Gateway BACnet MS-TP

Drop Tubes



Product Code	Description	Type	Product Code	Description	Type
HUNTER-DR2	61cm drop tube	Titan / ECO	HUNTER-RDR2	60cm drop tube	RM
HUNTER-DR3	90cm drop tube	Titan / ECO	HUNTER-RDR3	90cm drop tube	RM
HUNTER-DR4	121cm drop tube	Titan / ECO	HUNTER-RDR4	121cm drop tube	RM
HUNTER-DR5	152cm drop tube	Titan / ECO	HUNTER-TRAK-DR2BK	61cm drop tube	Trak
HUNTER-DR6	180cm drop tube	Titan / ECO	HUNTER-TRAK-DR3BK	90cm drop tube	Trak
HUNTER-DR8	240cm drop tube	Titan / ECO	HUNTER-TRAK-DR4BK	121cm drop tube	Trak
HUNTER-DR10	300cm drop tube	Titan / ECO	HUNTER-TRAK-DR5BK	180cm drop tube	Trak



Selecting the Correct HVLS Fan

Not all HVLS fans are the same. Whether you are moving air through a commercial space, temperature sensitive facility or large industrial warehouse, choosing the right size Hunter fans with the most effective spacing will give the best return on your customer's investment.

To assist with choosing the most effective HVLS fans, our web-based step by step application makes selection easy. Once on the HVLS page, simply enter the width, length, and height of the area, together with the ambient temperature and desired cooling effect from the fans. The selection tool will provide a number of possible options that list the number of fans, fan sizes and suggested spacing.

The Fantech HVLS selection tool performs calculations to ASHRAE 55-2017 "Thermal Environmental Conditions for Human Occupancy". This determines the cooling effect of Hunter HVLS fans at different locations relative to the fans (under normal conditions). It can also estimate energy savings when using HVLS fans in air-conditioned spaces, or when HVLS fans are used for de-stratification.

▶ Visit our HVLS fan selection tool
www.fantech.com.au/hvls/



Fantech Pty. Ltd.

Victoria: (+61 3) 9554 7845
New South Wales: (02) 8811 0400
South Australia: (08) 8294 0530
Northern Territory: (08) 8947 0447
Queensland: (07) 3299 9888
Western Australia: (08) 9209 4999
A.C.T.: (02) 6280 5511
New Zealand: (09) 444 6266

www.fantech.com.au |    

For sales enquiries contact:

Specifications and design subject to change without notice.

A MEMBER OF  ELTA GROUP