

# A Real Advance in HVLS Technology



The **Hunter Range** of innovative, direct-drive HVLS fans use a unique aerofoil blade design with twist profile that maximises efficiency across the entire range of fan diameters.



# The New Standard in HVLS Fans

Hunter's range of industrial fans gives better performance and efficiency with a direct drive motor specially developed for HVLS fans that also reduces the fan's overall weight. In collaboration with an aerospace engineer, Hunter has created an aerofoil blade with a unique and cutting edge twist profile that maximises efficiency across the range of fan diameters. This advanced blade design delivers a higher volumetric flow rate whilst minimising power consumption.

## Who is Hunter Fan Company?

Hunter Fan Company was established in 1886 when its founder John Hunter and his son James invented a water-powered, belt driven device with whirling blades. Hunter is now one of the largest residential fan companies in the world and is committed to quality and innovation. Hunter Industrial is part of that heritage with their HVLS fans embodying their passion for pioneering ceiling fan technologies.

*Hunter*  
INDUSTRIAL



# Features and Benefits

## Next Generation Direct Drive Motor

Utilises a high-performance direct drive, permanent magnet motor to increase energy efficiency and reduce fan weight. It generates large amounts of torque at slow speeds while providing whisper-quiet gearless operation.

## Cutting Edge Blade Technology

Hunter's structural grade aluminium blades maximise air flow and minimise noise levels with a unique twist profile to match each individual fan size.

## Effortless Installation

Time-saving plug-n-play system includes pre-installed bolts, pre-wired drop tube pre-aligned mounting brackets and I-beam clamp.

## Contemporary Style

Built tough with a sleek design that will complement any showroom, sports centre or warehouse.

## Two Industrial HVLS Fan Ranges

- Hunter Titan - 5 sizes from 4.2 (14') to 7.3 (24') metres
- Hunter ECO - 8 sizes from 2.4 (8') to 7.3 (24') metres



# Hunter Titan HVLS Fan

There are large industrial HVLS fans, and there's the Titan. Available in five sizes from 4.2m to 7.3m this master of the air thoroughly mixes the air within an indoor space eliminating uneven temperatures. It can reduce energy costs, improve comfort and increase productivity. The Titan features an efficient direct drive permanent magnet motor designed to be quieter, generate large amounts of torque and is up to 25% more efficient than gear driven HVLS fans. These Hunter HVLS fans not only provide widespread air movement, they also have a sleek and contemporary design that will complement any commercial space.

- Blades are formed with a unique twist profile for each individual fan size to maximise air flow and minimise noise levels
- Simplifies installation with pre-installed bolts, quick connect blades, pre-wired drop tube, pre-aligned mounting brackets and I-beam clamp
- Effective coverage area ranges from 484m<sup>2</sup> (4.2m Titan HVLS) to 1,369m<sup>2</sup> (7.3m Titan HVLS)
- Highly efficient 5 blade configuration designed to maximise airflow performance
- Manage up to 5 fans with Hunter's Basic Controller or a network of 10 fans with the Premium Hunter Controller
- Can be connected to a Building Management System (BMS)
- 15-year Non-Prorated Warranty\*



*\*15 years warranty applies when the fan is installed by a Fantech Authorised Installer. Conditions apply.*



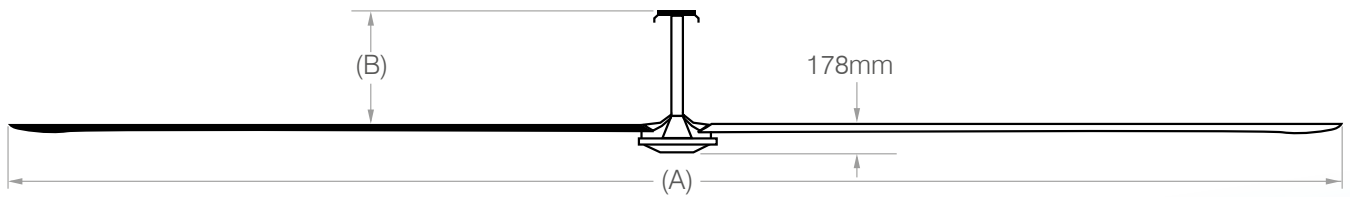
*Each blade on the Titan HVLS fan snap-locks into the direct drive motor hub and is secured via 2 fixing screws*



## Technical Data

Model No.	HUNTER-TITAN14	HUNTER-TITAN16	HUNTER-TITAN18	HUNTER-TITAN20	HUNTER-TITAN24
Fan Diameter (A)	4.2m	4.8m	5.5m	6.1m	7.3m
Input Power	AC 3PH 380-480V 50/60 Hz				
Recommended Drop Tube (B)	90cm	90cm	90cm	121cm	121cm

(B) Drop tubes available in 61cm, 90cm, 121cm, 182cm, 243cm and 305cm



Motor Power	3/4 HP	1 HP	1 HP	1 HP	1 HP
	0.56 kW	0.75 kW	0.75 kW	0.75 kW	0.75 kW
Effective Range Area*	484 m <sup>2</sup>	625 m <sup>2</sup>	784 m <sup>2</sup>	961 m <sup>2</sup>	1,369 m <sup>2</sup>
Max air flow AMCA230-15	40.78 m <sup>3</sup> /s	61.09 m <sup>3</sup> /s	68.56 m <sup>3</sup> /s	76.64 m <sup>3</sup> /s	105.44 m <sup>3</sup> /s
Max air flow AMCA 230-99	57.68 m <sup>3</sup> /S	86.41 m <sup>3</sup> /s	96.96 m <sup>3</sup> /s	108.40 m <sup>3</sup> /s	149.14 m <sup>3</sup> /s
Max RPM	103	102	95	74	70
Fan Hang Weight#	76.2 kg	79 kg	83 kg	86 kg	93 kg

\* Effective range area is based on 1.5 to 2 m/s air flow at face/chest level

# Total fan hang weight. Included blades, motor, hanging system, accessories





# Hunter ECO HVLS Fan

Hunter ECO is one of the lightest HVLS fans available with robust direct drive motor and structural aluminium blade design. The range also comes with the same plug & play, pre-assembled technology to simplify installation and a choice of touchscreen controllers to manage a network of up to ten HVLS fans.

With blade spans from 2.4m to 7.3m, the Hunter ECO range of HVLS fans will de-stratify your building space and reduce your energy bill while making your workforce comfortable and more productive.

- Blades are formed with a unique twist profile for each individual fan size to maximise air flow and minimise noise levels
- Simplifies installation with pre-installed bolts, quick connect blades, pre-wired drop tube, pre-aligned mounting brackets and I-beam clamp
- Effective coverage area ranges from 95m<sup>2</sup> (2.4m ECO HVLS) to 858m<sup>2</sup> (7.3m ECO HVLS)
- Highly efficient 4 blade configuration designed to maximise airflow performance
- Manage up to 5 fans with Hunter's Basic Controller or a network of 10 fans with the Premium Hunter Controller
- Can be connected to a Building Management System (BMS) for improved fan efficiency
- 10-year Non-Prorated Warranty\*



*\*10 years warranty applies when the fan is installed by a Fantech Authorised Installer. Conditions apply.*



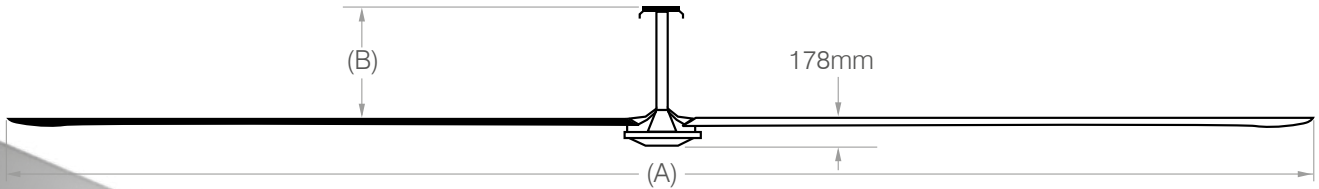
*Each blade on the ECO HVLS fan is bolted to the direct drive motor hub via pre-installed studs*



# Technical Data

Model No.	HUNTER-ECO08	HUNTER-ECO10	HUNTER-ECO12	HUNTER-ECO14	HUNTER-ECO16	HUNTER-ECO18	HUNTER-ECO20	HUNTER-ECO24
<b>Fan Diameter(A)</b>	2.4m	3.0m	3.6m	4.2m	4.8m	5.5m	6.1m	7.3m
<b>Input Power</b>	AC 3PH 380-480V 50/60 Hz							
<b>Recommended Drop Tube (B)</b>	61cm	61cm	61cm	90 cm	90 cm	90 cm	121 cm	121 cm

(B) Drop tubes available in 61 cm, 90cm, 121 cm, 182cm, 243cm and 305cm



<b>Motor Power</b>	5/8 HP	5/8 HP	5/8 HP	5/8 HP	5/8 HP	5/8 HP	5/8 HP	5/8 HP
	0.466 kW	0.466 kW	0.466 kW	0.466 kW	0.466 kW	0.466 kW	0.466 kW	0.466 kW
<b>Effective Range Area*</b>	95 m <sup>2</sup>	149 m <sup>2</sup>	214 m <sup>2</sup>	291 m <sup>2</sup>	380 m <sup>2</sup>	484 m <sup>2</sup>	595 m <sup>2</sup>	858 m <sup>2</sup>
<b>Max air flow AMCA230-15</b>	15.41 m <sup>3</sup> /s	25.02 m <sup>3</sup> /s	30.38 m <sup>3</sup> /s	40.69 m <sup>3</sup> /s	51.40 m <sup>3</sup> /s	60.27 m <sup>3</sup> /s	72.17 m <sup>3</sup> /s	96.48 m <sup>3</sup> /s
<b>Max air flow AMCA 230-99</b>	21.80 m <sup>3</sup> /s	35.39 m <sup>3</sup> /s	42.97 m <sup>3</sup> /s	57.55 m <sup>3</sup> /s	72.70 m <sup>3</sup> /s	85.25 m <sup>3</sup> /s	102.08 m <sup>3</sup> /s	136.46 m <sup>3</sup> /s
<b>Max RPM</b>	156	139	107	107	95	78	77	61
<b>Fan Hang Weight#</b>	40 kg	43 kg	46 kg	58 kg	61 kg	62 kg	66 kg	72 kg

\* Effective range area is based on 1.5 to 2 m/s air flow at face/chest level

# Total fan hang weight. Included blades, motor, hanging system, accessories





# Controllers

The Hunter range of touchscreen controllers is designed to manage from one Hunter HVLS fan to a large system with multiple fans and sensors. The control system takes advantage of the latest digital technology to ensure it can be tailored to suit the requirements of almost any high ceiling application.

## Premium Network Controller

Hunter's simple to use Premium Network Controller features a touch screen graphic interface which makes managing a network of up to 10 HVLS fans easy. This flexible controller can be factory pre-configured to operate each fan individually or help drive an energy saving Demand Control Ventilation system.

- Speed control up to 10 HVLS fans in forward or reverse
- HVLS fans can be managed individually or as a group
- Password protected 7-day scheduling
- Integrated fan diagnostics for troubleshooting
- Reliable Ethernet connectivity with TCP/ IP



## Basic Network Controller

The touch screen Basic Network Controller is designed to manage up to 5 hunter HVLS fans individually. It can turn each fan on and off, alter fan speed and rotation direction.

- Speed control up to 5 HVLS fans in forward or reverse
- Reliable Ethernet connectivity with TCP/ IP







## It's all in the Blade Profile

Hunter Fan's innovative blade geometry, combined with its 4 and 5 blade configurations generates large air volumes while minimising noise and energy usage. Since pressure development doesn't help HVLS fan performance, increasing the number of blades to 6 or more has virtually no benefit. Instead, 6 or more blades will increase fan weight; increase drag and decrease the fan's energy efficiency. Every fan size in the Hunter range has its own blade profile that varies over the length of the extrusion to ensure air flow is maximised across its entire length.

## Direct Drive Permanent Magnet Motor

HVLS fans from Hunter use 3-phase direct drive, permanent magnet motors that come with several advantages:

- Generates large amounts of torque while operating at slow speeds
- Whisper quiet gearless operation at less than 55dBA @ 3metres
- Offers significant savings on running costs and efficient performance under partial loads
- Up to 25% more energy efficient than gearbox or gear driven fan motor
- Extremely durable with fewer components
- Comes with a pre-configured VSD with simple push and turn plugs to connect to motor and touch screen

# Engineered for Easy Installation

When Hunter's Titan and ECO HVLS fans were developed, ease of installation was a primary factor in its engineering. The result is a range of Hunter HVLS fans that are quick to install, simple to commission and reduce the risk of installation mistakes. Hunter fans have fewer blades, fewer moving parts, the range weighs less and everything that can be pre-assembled has been.

- Hunter HVLS fans come with pre-installed studs, a pre-wired drop tube, and pre-aligned mounting brackets
- Blade clamps are replaced with a proprietary quick connect blade system
- Drop tube comes with a quick connect clamping system that attaches drop tube to the building's I-beam without drilling holes.



*Integrated mounting plate with drop tube and pre-installed studs simplifies motor mounting*



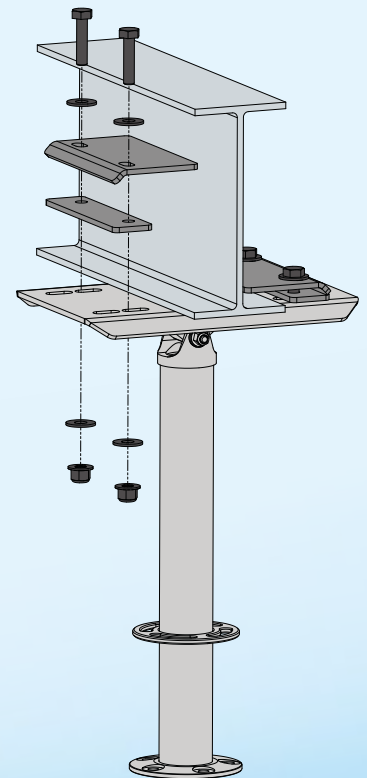
*Easy to connect power and safety cable from the dropper tube to motor hub*



*Drop tube is pre-fitted with retention cable harnessing ring and pre-wired with power and safety cables*



*Drop tube with integrated universal joint for pitched roof alignment*



*Quick connect clamping system eliminates the need to drill holes into the building's I-beam*



*Titan Range: Each blade snap-locks into the direct drive motor hub and secured via fixing screws*



*ECO Range: Each blade is bolted to the direct drive motor hub via pre-installed studs*

# Quick Reference Chart

## Hunter Titan HVLS Fans



Product Code	Description
HUNTER-TITAN14	4.2m Titan HVLS fan (with 90cm drop tube)
HUNTER-TITAN16	4.8m Titan HVLS fan (with 90cm drop tube)
HUNTER-TITAN18	5.5m Titan HVLS fan (with 90cm drop tube)
HUNTER-TITAN20	6.1m Titan HVLS fan (with 121cm drop tube)
HUNTER-TITAN24	7.3m Titan HVLS fan (with 121cm drop tube)

## Hunter ECO HVLS Fans



Product Code	Description
HUNTER-ECO08	2.4m ECO HVLS fan (with 61cm drop tube)
HUNTER-ECO10	3.0m ECO HVLS fan (with 61cm drop tube)
HUNTER-ECO12	3.6m ECO HVLS fan (with 61cm drop tube)
HUNTER-ECO14	4.2m ECO HVLS fan (with 90cm drop tube)
HUNTER-ECO16	4.8m ECO HVLS fan (with 90cm drop tube)
HUNTER-ECO18	5.5m ECO HVLS fan (with 90cm drop tube)
HUNTER-ECO20	6.1m ECO HVLS fan (with 121cm drop tube)
HUNTER-ECO24	7.3m ECO HVLS fan (with 121cm drop tube)



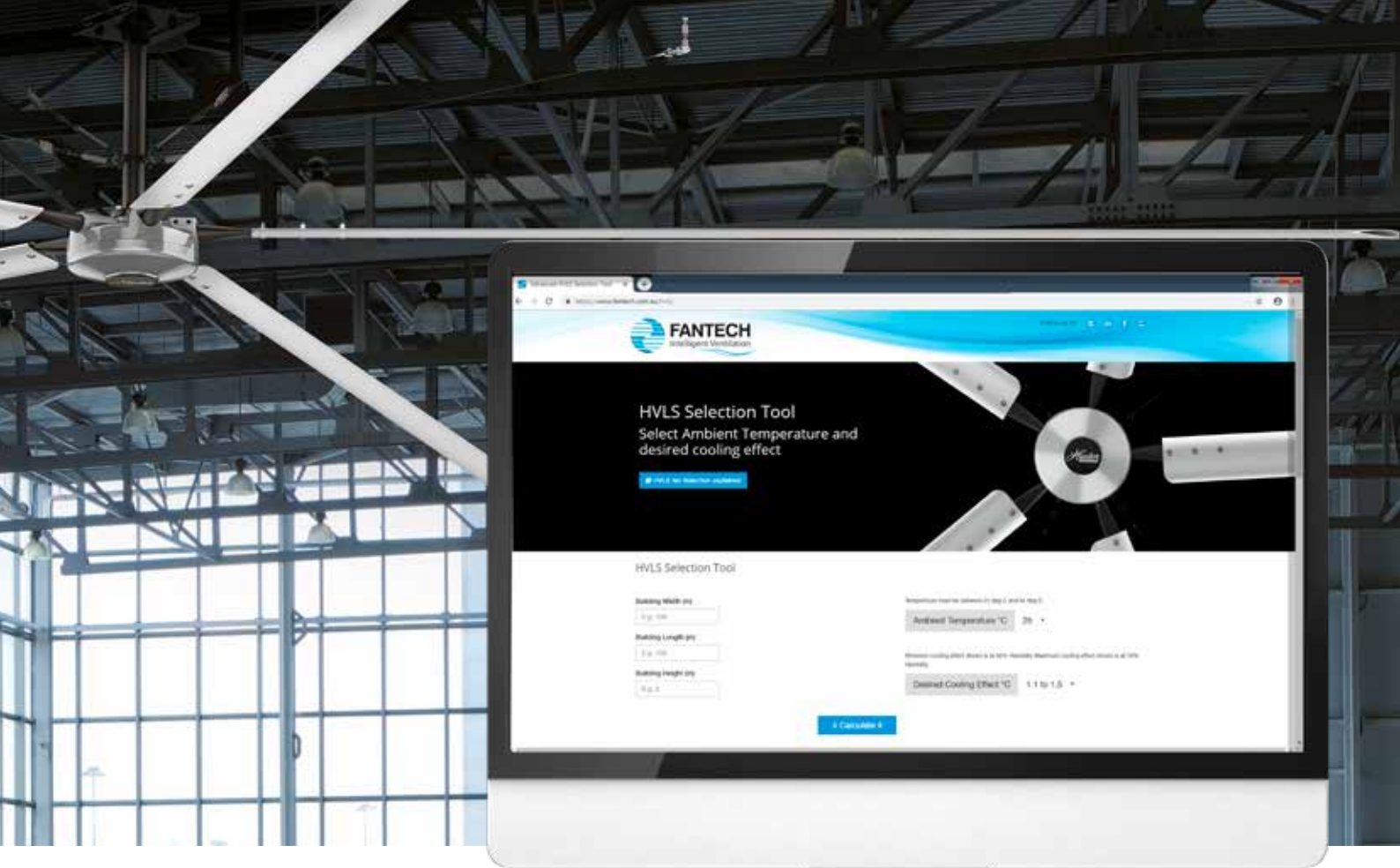
## Hunter Controls

Product Code	Description
HUNTER-BASIC5	Hunter Basic Controller (up to 5 HVLS fans)
HUNTER-PREMIUM5	Hunter Premium Controller (up to 10 HVLS fans)

## Optional Drop Tubes



Product Code	Description
HUNTER-DR2	Hunter 61cm drop tube
HUNTER-DR3	Hunter 90cm drop tube
HUNTER-DR4	Hunter 121cm drop tube
HUNTER-DR6	Hunter 180cm drop tube
HUNTER-DR8	Hunter 240cm drop tube
HUNTER-DR10	Hunter 300cm drop tube



# Selecting the Correct HVLS Fan

Not all HVLS fans are the same. Whether you are moving air through a commercial space, temperature sensitive facility or large industrial warehouse, choosing the right size Hunter fans with the most effective spacing will give the best return on your customer's investment.

To assist with choosing the most effective HVLS fans, our web-based step by step application makes selection easy. Once on the HVLS page, simply enter the width, length, and height of the area, together with the ambient temperature and desired cooling effect from the fans. The selection tool will provide a number of possible options that list the number of fans, fan sizes and suggested spacing.

The Fantech HVLS selection tool performs calculations to ASHRAE 55-2017 "Thermal Environmental Conditions for Human Occupancy". This determines the cooling effect of Hunter Titan HVLS fans at different locations relative to the fans (under normal conditions). It can also estimate energy savings when using HVLS fans in air-conditioned spaces, or when HVLS fans are used for de-stratification.

▶ Visit our HVLS fan selection tool  
[www.fantech.com.au/hvls/](http://www.fantech.com.au/hvls/)

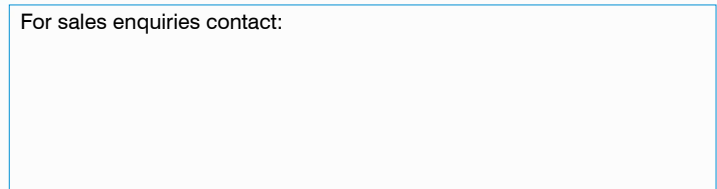


## Fantech Pty. Ltd.

Victoria: (+61 3) 9554 7845  
 New South Wales: (02) 8811 0400  
 South Australia: (08) 8294 0530  
 Northern Territory: (08) 8947 0447  
 Queensland: (07) 3299 9888  
 Western Australia: (08) 9209 4999  
 A.C.T.: (02) 6280 5511  
 New Zealand: (09) 444 6266

[www.fantech.com.au](http://www.fantech.com.au) | [Twitter](#) | [LinkedIn](#) | [Facebook](#) | [YouTube](#)

For sales enquiries contact:



Specifications and design subject to change without notice.